



SOURCE

THE COMMUNITY ENGAGEMENT AND SERVICE-LEARNING CENTER
SERVING THE JOHNS HOPKINS UNIVERSITY
SCHOOLS OF PUBLIC HEALTH, NURSING, AND MEDICINE



ANNUAL REPORT 2023-2024

Our Mission and Work

SOURCE's mission is to engage the Johns Hopkins University (JHU) health professional schools and Baltimore communities in mutually beneficial partnerships that promote health and social justice.

Since 2005, SOURCE has connected students, faculty and staff from the JHU Schools of Public Health, Nursing, and Medicine with meaningful, mutually beneficial community engagement opportunities in Baltimore City.

SOURCE partners with over 100 community-based organizations (CBOs) in Baltimore City, and supports a wide range of engagement opportunities that respond to community-identified needs.

These engagement opportunities include:

- Intensive, year-long **community-academic partnership and training programs**
- For-credit **service-learning courses** and **degree requirement experiences**
- Special events and **programmatic series** held in connection with community partners

Driven by our core values of **reciprocity, justice, service, and collaboration**, SOURCE is proud to have made a lasting impact in 2023-2024 working with our partner organizations in Baltimore City and JHU schools.

2023-2024 By The Numbers

996



Unique Volunteers

30,858



Service Hours

Bloomberg School of Public Health



332

Unique Volunteers



12,172

Service Hours



School of Nursing



318

Unique Volunteers



14,809

Service Hours



School of Medicine



298

Unique Volunteers



3,508

Service Hours



369 service hours were reported by an additional **48 unique volunteers** from other Johns Hopkins programs, including the JH HEAT Corps, recruited volunteers to support SOURCE Service Scholars' activities, and volunteers reported by several SOURCE community partner organizations.

Financial Value of Volunteer Time

The estimated dollar value of volunteer time in Maryland in 2023 was \$34.99 per hour.*

Therefore, the estimated economic contribution by our volunteers in 2023-2024 is:

\$1,079,721

* Independent Sector, Department of Labor https://www.independentsector.org/volunteer_time

Our Guiding Principles for Baltimore Community Engagement

Informed by consultations with community-engaged colleagues across Johns Hopkins and community leaders, as well as best practices for community engagement, these principles were developed to guide our collective work in equitably and authentically engaging in community-campus partnerships. These principles are applied to all community-campus partnerships affiliated with SOURCE.

Shared Vision and Values

- Initiate partnerships with the intention of drawing together University and community in unity of purpose.
- Must co-develop shared vision, purpose, mission, values and goals.
- Partnerships should actively co-design projects that dismantle oppressive systems, confront disinvestment, and work toward justice.

Mutuality and Respect

- The structures, policies, and participants of a partnership will reflect the importance and value of all contributors for their unique expertise and experience.
- Participants will commit to building trust, exploring history, working for reconciliation and equity, and practicing humility.
- Co-design partnership practices and policies that acknowledge and leverage power and privilege for the shared vision.

Transparency and Communication

- Co-develop transparency and communication partnership guidelines. Guidelines should be updated as needed. Include plan for how to share partnership outcomes.
- Participants will disclose relevant and accurate information with each another and communicate clearly, authentically, and regularly using a variety of different methods to optimize engagement.

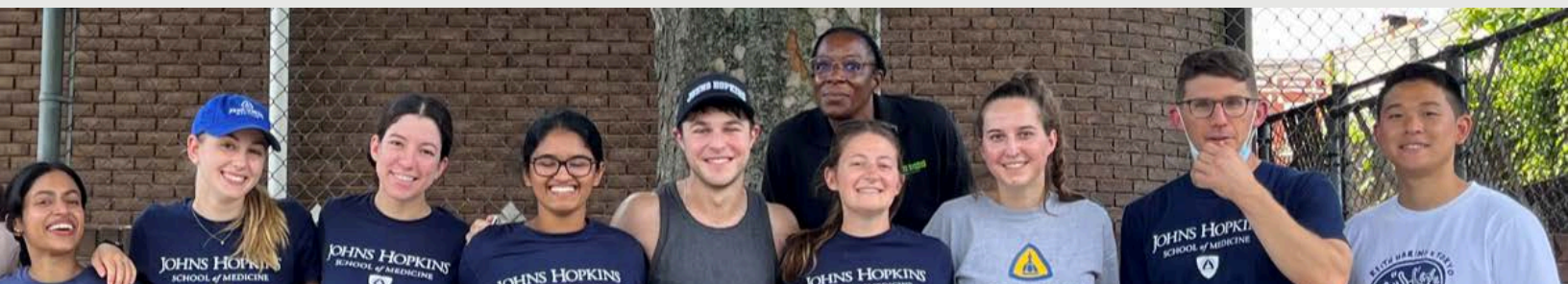
Shared Decision Making

- Partners will co-develop process for making decisions together. Create guidelines/structures for shared power. Projects should establish leadership structures with community partners.
- Participants will gather the best available information to inform their decisions, incorporate the values and preferences of members in an inclusive manner, and share power, responsibility, and accountability.

Commitment

- Hold each other accountable to deliver as promised on the partnership's shared vision and expectations.
- Remain faithful to partnership and vision in the face of opposition or challenges.
- Build, when relevant, a sustainability plan to maintain and grow partnership outcomes.

To learn more about our Guiding Principles and how they are put into practice, visit SOURCE.jhu.edu/about-SOURCE



Our Social Justice Commitments

While supporting these principles, SOURCE strives to incorporate our three core Social Justice Commitments into our work. These core commitments were developed with key terms by an earlier SOURCE Social Justice Taskforce comprised of participating students, faculty, staff, and community partners.

SOURCE commits to ensuring that education has a central role in emancipation.

- **Intention:** It is important to define and align individual intentions toward the shared vision and values, and clearly lay out all partners' expectations for the outcomes of the partnership as well as its impact.
- **Embodiment:** It is essential to embrace repeated self-reflection, to move service away from performance and toward meaningful change and justice.
- **Compassion:** It is essential to recognize and value the humanity of all involved caring directly and indirectly for both the collective group and individual participants.
- **Leadership:** It is important for all partners to understand their leadership roles and responsibilities, and continuously question whether their roles reflect and actively work toward the ideals of social justice and anti-oppression.
- **Iterative Process:** It is critical for all participants to continue striving toward justice rather than only meeting a firm goal; and therefore, partners will practice compassion, remain reflective, and be open to collaborative revision.

SOURCE commits to promoting that all learning is contextual.

- **History:** It is essential to understand historic systems of oppression and power, how they impact JHU and Baltimore community partners, and the larger context they bring to these relationships.
- **Recognition:** It is important to acknowledge, welcome, and honor the diverse identities and histories of all partners and community members so that differing perspectives are valued and recognized positionalities can inform all aspects of the collaborative work.
- **Collective Work:** It is important to recognize that solutions do not lie with any single entity, and a culture of collaboration is needed to both strengthen individual assets and uncover potential biases in partnership practices.

SOURCE commits to aiding in the dismantling of existing systems of power and privilege.

- **Power:** It is essential to acknowledge the current systems of power at play between partners, and across society at large, to clearly identify the role that these structures play in creating and maintaining unjust systems.
- **Ever-changing:** It is important to acknowledge that systems of power and marginalization continue to shift, and that such changes will transform how partners value outcomes and how communication strategies will adapt to strengthen collaborative work.
- **Action:** It is important to accept that anti-oppression work is continuous, requires ongoing motivation, and acts to aid in dismantling injustice.

To learn more about our Social Justice Commitments visit:

SOURCE.jhu.edu/about-SOURCE

2023-2024 Program Highlights

Baltimore Action Projects

SOURCE collaborates with the Bloomberg American Health Initiative to support **Baltimore Action Projects**. These projects focus on the five areas identified by the Initiative to reshape the national public health agenda: Addiction and Overdose, Adolescent Health, Environmental Challenges, Food Systems for Health, and Violence. The projects provide an opportunity to tackle these issues with Baltimore partners.

In partnership with the Initiative, SOURCE and community-based organizations (CBOs), Baltimore Action Projects are community-identified projects which directly address the Initiative's focus areas. Through the Initiative's funding, graduate students from the Johns Hopkins Bloomberg School of Public Health and Johns Hopkins School of Nursing are hired to work a minimum of 100 hours to complete Baltimore Action Projects in partnership with CBOs.

In 2023-2024, the seventh year of the program, **seven** Baltimore Action Projects were completed.

SOURCE.jhu.edu/BAP

[Learn more about our 2023-24 BAP Students](#)

Sample BAP project titles included:

“Food Access Project”

with Asylee Women Enterprise

“Engaging Youth in Sports”

with Banner Neighborhoods

“Understanding Food Access in Urban Planning”

with Baltimore Food Policy Initiative



778 hours of service
contributed in the
community through
Baltimore Action Projects



Community Outreach Program at the Johns Hopkins School of Nursing

SOURCE collaborates with the Johns Hopkins School of Nursing to coordinate the Community Outreach Program (COP). Through COP, nursing students are placed with a community-based organization for the academic year to gain practical experiences in public health nursing and service-learning. At the end of the 2023-2024 academic year:

12 Students reported their experiences via online COP log

7 Community-based organizations were served

770 People served directly through student actions

395 hours of service
contributed in the
community through **COP**



2023-2024 Program Highlights

SOURCE Service Scholars

Fifteen students from BSPH, JHSOM, and JHSON successfully completed the **SOURCE Service Scholars (SSS) Program** in 2023-2024.

The program pairs Scholars with partner community-based organizations who have designed projects to address their urgent programmatic and client priorities.

Scholars commit themselves to recruit and lead small teams of volunteers to complete these projects in the academic year, while simultaneously receiving training on:

- Foundations of effective community partnerships and service-learning
- Volunteer management and cultivation
- Design and facilitation of critical reflection
- Challenges & opportunities of working with Baltimore communities
- Project sustainability

Over the course of the Scholar year, **60 unique JHU student volunteers** were recruited to support SOURCE Service Scholar projects.

A total of **300 hours** were logged from these additional volunteers. The successful Scholars themselves dedicated a total of **2,283 hours**.

Total hours of JHU engaged volunteers and Scholars amounted to **2,583 hours in 2023-2024**.



2,583 hours of service contributed in the community through the **SOURCE Service Scholars Program**



2023-2024 Program Highlights



Sample SOURCE Service Scholar project titles included:

"Connecting Health Related Careers to Health Disparity Advocacy"

with MERIT Leadership Academy

"Client Storytelling Project"

with Lori's Hands

"Voices in My Head"

with New Song Community Learning Center

"Community-Informed Policy and Programming"

with Green and Healthy Homes Initiative

"Financial Literacy and Education for Asylum Seekers & Trafficking Survivors"

with Asylee Women Enterprise

"Including the Voices of Participants in Community Based Harm Reduction"

with SPARC

"Developing a Family Outreach and Engagement Model"

with Baltimore SquashWise

SOURCE.jhu.edu/Scholars

[Learn more about our 2023-24 SSS Students](#)

2023-2024 Program Highlights

Connection Community Consultants Program

The Connection is SOURCE's short-term, small team consulting program which responds to requests from community partners. In 2023-2024, **5 projects** requested by five SOURCE community partners were completed through the program. A total of **17 students (15 BSPH and 2 SOM)** participated in the program. Highlights of the 2023-2024 Connection Community Consultants projects include:

"Grant Writing for After School and Food Programs to Support Local School" with Henderson-Hopkins Partnership School

The Henderson-Hopkins Partnership School needed grant writers to help provide funding to their programs. They have both an after-school program as well as a food security program that are in place to help students who are a part of their community. A team of BSPH and SOM students **prepared two grants which will be used to support these programs** and their larger mission.

"Literature Review: Influence of Childhood Literacy on Future Paths" with Reading Partners

Reading Partners needed a literature review to document the relationship between literacy (or lack thereof) and long-term impacts like high school completion, pursuing higher education, juvenile detention centers, and more. A team of 1 SOM and 3 BSPH students prepared the **literature review to understand the importance of youth literacy on future opportunities, and also held a digital literacy presentation** for the organization and community.

"Revamping and Refreshing Employee Handbook and Onboarding Materials" with Franciscan Center

The Franciscan Center needed an updated employee handbook and onboarding materials to ensure unity across departments. 3 BSPH students **updated their handbook and created a short onboarding program so all new employees are receiving the same training.**

**HENDERSON
HOPKINS**



**READING
PARTNERS**



Franciscan Center
A Ministry of the Sisters of St. Francis of Assisi

SOURCE.jhu.edu/Connection

2023-2024 Program Highlights

SOURCE Service-Learning Academy

The Johns Hopkins SOURCE Service-Learning Academy welcomed our 12th cohort of fellows this year, including the 3rd group of faculty fellows from across the country.

In addition to **two JHU faculty fellows** and **three Baltimore community fellows**, we accepted **six faculty fellows from a diverse range of institutions** across the United States.

SOURCE's Service-Learning Academy is one of the most comprehensive service-learning fellows programs in the country, and includes a rare feature of training faculty and community fellows together on key elements of critical service-learning, social justice, and community-academic partnerships.

The Academy reflects our commitment to being a leader in critical service-learning in the health professions, growing our reach for communicating our impactful partnerships in Baltimore and using them as a model of social change to spread across the country and around the globe.



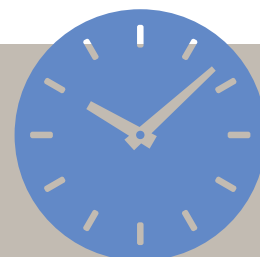
The program includes:

- 2.5-day kick-off seminar
- 1-on-1 advising for faculty course development
- Bi-monthly required cohort meetings
- Bi-monthly optional fellows meetings for all current and past fellows
- Final presentation and celebration
- Community Fellows project to support SOURCE

Students in JHU service-learning courses taught by new and previous Faculty Fellows in the 2023-2024 academic year reported serving approximately **20,910 hours** cumulatively, which includes direct service time and time spent working on their projects. **395 students** participated in these courses.



20,910 hours of service to the community through **service-learning courses**



SOURCE.jhu.edu/SLA

2023-2024 Program Highlights



2023-2024 SOURCE Service-Learning Faculty Fellows

Sarah Blenner, JD, MPH
University of California-Los Angeles

Jodie L. Guest, PhD, MPH
Emory University

Katherine Humphrey, DNP, FNP-BC
Johns Hopkins University

Elizabeth Mackessy-Lloyd, RN, CNE
Hood College

Robin McGee, PhD, MPH
Emory University

Taylor Tresatti, MPH
George Washington University

Elizabeth Wall-Bassett, PhD, RDN, FAND
Western Carolina University

Sara Wilensky, JD, PhD
George Washington University

Rebecca Wright, PhD, BSC (HONS), RN
Johns Hopkins University

2023-2024 SOURCE Service-Learning Community Fellows

Jayson Green
Executive Director, New Song Community Learning Center

Ciara Huff
Executive Director, CASA

Sandra Hunsicker
Volunteer Coordinator, The Esperanza Center

2023-2024 Program Highlights

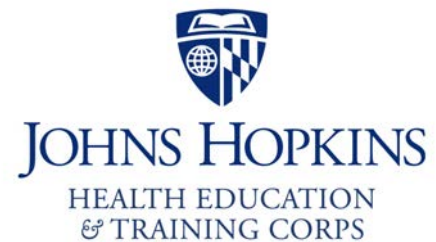
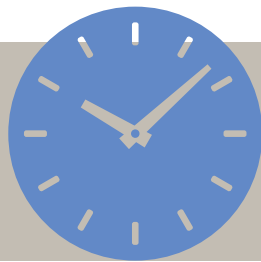
Johns Hopkins Health Education and Training (HEAT) Corps

Now in its fourth year, Johns Hopkins Health Education And Training Corps (HEAT Corps) started as a collaboration between Medicine for the Greater Good, Government, Community and Economic Partnerships, SOURCE and several partners across the Johns Hopkins Institutions. SOURCE recruits Johns Hopkins volunteers to provide health education and training regarding important health topics to K-12 youth. The curriculum is taught virtually in schools throughout the United States as well as several other countries, with a particular focus on Baltimore City Public Schools.

Through a series of 45-minute sessions, the HEAT Corps aims to heighten student awareness about COVID-19, mental health, and e-cigarettes and vaping. Hopkins volunteers had a unique opportunity to develop their own health education and teaching skills, while simultaneously supporting youth in their understanding of these health topics.

Volunteers also received training and guidance from a team of Johns Hopkins faculty and staff. In 2023-24, **50 volunteers contributed 239 hours** of service.

239 hours of service contributed in the community through **Johns Hopkins HEAT Corps**



HIV Counseling & Testing Program

SOURCE's HIV Counseling and Testing Program successfully recruited, trained, and retained **6 students** from across the JHU health professional schools, including **3 from BSPH, 2 from SOM, and 1 from SON**, in 2023-24.

All volunteers completed training in order to become certified by the state of Maryland as HIV counselors, and served as HIV counselors/testers at **The Harriet Lane Clinic** (only one site in 2023-24 due to CBO staff capacity issues).

273 hours of service to the community via the **HIV Counseling and Testing Program**



2023-2024 Event Highlights

SOURCE Introductory Events

Each academic year, SOURCE aims to make current and prospective students aware of the opportunities that exist for impactful community engagement with our partners in Baltimore. SOURCE reaches students through various fairs, orientations and information sessions.

In 2023-2024, SOURCE's Introductory Events included:

- **4** SOURCE Information Sessions
- **11** Orientation Presentations & Activities Fairs
- **8** Accepted Students Presentations



Baltimore Week 2023

Early each academic year, SOURCE hosts **Baltimore Week**, our annual celebration of the Baltimore community through a social justice lens. In 2023, our series of activities included:

- Panel: "Community Engagement: Dispelling Myths/Providing Tips"

- Guest Speaker: Ava Richardson, Director of Baltimore City Office of Sustainability
- Film Screening of "*Breathing Black*" with Q+A
- Canned Food Donation Drive
- SOURCE Fall Tri-School Day of Service

2023-2024 Event Highlights

National Volunteer Week 2024

In April 2024, SOURCE held its 19th annual **National Volunteer Week** in order to thank and recognize those that gave their time and talent to support Baltimore. Our series of events included:

- Kick-Off Happy Hour

- SOURCE Spring Tri-School Day of Service
- SWEET Seminar with Anna Baetjer Society
- SOURCE Community Service Awards Luncheon
- Baltimore Action Projects Celebration
- SOURCE Service Scholars Celebration



2023-2024 Highlights

Advancing Research at SOURCE

In 2023-2024, SOURCE redoubled its efforts to remain community centered in all aspects of our work, including our research agenda. This year, SOURCE faculty and senior fellows contributed original research to the public health, nursing, and education fields. This includes a research paper highlighting community voices in community-academic partnerships and the successful conclusion of a community co-led grant impacting Baltimore city residents. The work we do with our faculty and community partners helps spread the word to other communities and academic centers about successful models for justice-based work for community collaboration.

Peer Reviewed Research Articles

Derreth, R. T., Nelson, K., Nguyễn, C., Adams, A., and **Levin, M.B.** (2024). "Community Partner Experiences in a Service-Learning Development Program." *Journal of Higher Education Outreach and Engagement* 28, (2)

Partnering Grants

"Competency-Based Education for Practice-Ready Nurse Graduates." December 2022-December 2025. American Association of Colleges of Nursing, \$100,000.

"Good Harvest Occupational Skills Training Program." July 2021-June 2024. Johns Hopkins Innovation Fund for Community Safety. \$750,000

"Johns Hopkins Health Education and Training Corps." September 2021 - August 2023. Office of Minority Health. \$300,000

National Presentations

Derreth, R. T., & Wright, D. K. (April, 2024). "Painful Truths, Radical Humility, and Researcher Vulnerability: Writing on racism within cross-racial research teams." Paper presented at the annual meeting of the American Education Research Association, Philadelphia, PA.

Derreth, R. T. & Wright, D.K. (November 2023). *Blackness As 'Debt': Examining Institutional*

Practices Devaluing Black Professional School Faculty. Paper presented at the annual meeting of the Association for the Study of Higher Education, virtual.

Barrera, D, Hirt, L, **Levin, M.B.**, Snitgen, M. *Compensating & Recognizing Community Partners: Findings from a Survey of Compact Members.* Campus Compact annual conference. Denver, CO (April 2024).

Nelson, K, Barry, J, Bash, C, Choney, C, **Levin, M.B.**, Norton, RA. *Not My Gas Stove! Community Advisory Board Development for Equitable Implementation of Electrification in Baltimore City.* American Public Health Association conference. Atlanta, GA. Poster session (November 2023).

Martin, B, Banks, O, Brown, M, Bryan, J, Jones, V, Galiatsatos, P, **Levin, M.B.**, Anderson, A, Johnson, A, Ling, C. *Health Education and Training (HEAT) Corps: Advancing Public Health Education for K-12 Students.* Coalition of Urban and Metropolitan Universities (CUMU) annual conference. Washington, D.C. Poster session (October 2023).

DEI Ecosystems at JHU, **Levin, M.B.** panelist. Johns Hopkins University 20th annual Diversity & Inclusion Conference. Baltimore, MD. (October 2023).

2023-2024 Highlights

Special Recognitions

2023

Educational Program Award given to Johns Hopkins HEAT Corps team, including Mindi Levin of SOURCE

Presented by the Johns Hopkins Medicine Institute for Excellence in Education

[Read more details here](#)

2024

Ernest Lyman Stebbins Medal awarded to Mindi Levin

The **Ernest Lyman Stebbins Medal** is the highest honor bestowed by the Johns Hopkins Bloomberg School of Public Health for educational excellence. One member of the faculty receives the medal each year for contributions to the teaching programs over a period of at least 5 years, beyond the boundaries of a single department.

The award was presented by Dean Ellen MacKenzie at Commencement in May 2024. In Dean MacKenzie's words, "Professor Levin's vision and her leadership of SOURCE have made a lasting impact on how we teach, resulting in innovative strategies that bring service-learning opportunities and critical pedagogy into our curricula. She has helped ensure that we embed the values of public service, social justice, and activism into our School's culture."

[Read more details here](#)



2023-2024 Highlights

Social Justice Initiatives

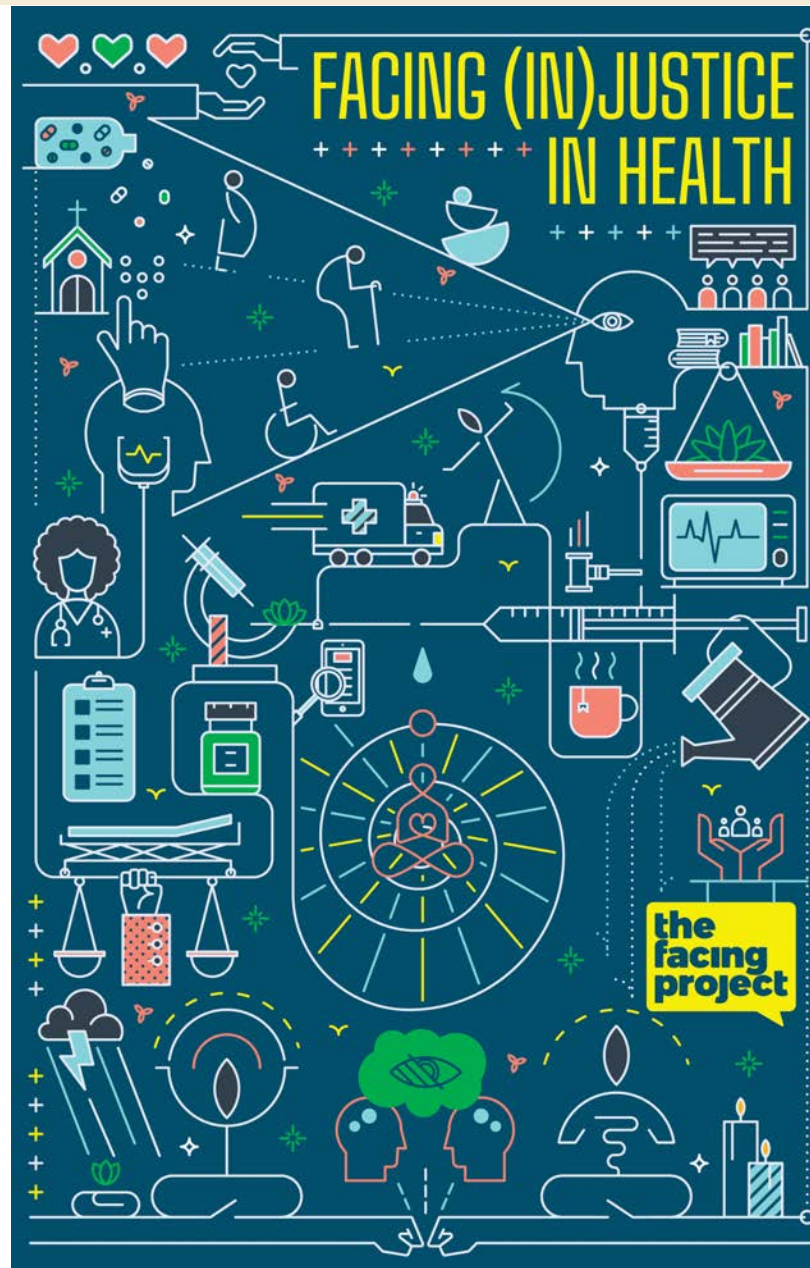
SOURCE brings intentional social justice orientation into our community engagement and critical service-learning work. In alignment with SOURCE's Social Justice Commitments and our Guiding Principles, team members continue to advance social justice efforts through leveraging institutional partnerships and strengthening student engagement with our community partners. In 2023-24, our work progressed on two key projects focused on amplifying our community's voices and increasing collaboration among our different stakeholders.

"Facing (In)Justice in Health"

SOURCE partnered with Transform MidAtlantic and The Facing Project in 2024 to gather stories on "Facing (In)Justice in Health in Baltimore". The Facing Project is a national nonprofit that creates a more understanding and empathetic world through stories that inspire action. We are excited to lead this storytelling collaboration, foster meaningful connections, and support emerging stories that we hope will begin reflective dialogue around health disparities in Baltimore City – an issue that touches so many lives in our community yet is often not discussed beyond the numbers.

This project paired storytellers and writers who volunteered their time to bring important stories to light, increasing a sense of meaning, purpose, and control over unjust experiences while providing opportunities for personal and professional growth and skill building. Storytellers and writers were either affiliated with a SOURCE partner CBO or they were students, staff, or faculty at the three JHU health professional schools.

After completing the editorial process, this powerful collection of stories will be published as a book in the spring of 2025.



2023-2024 Highlights

Partner-to-Partner Conversations

One long-term project SOURCE prioritized in 2023-24 was documenting and elevating stories of impact with our partner community-based organizations. In 2023, our Service-Learning Academy Community Fellows conducted and recorded interviews with other community leaders of local Baltimore non-profit organizations in our SOURCE partner network.

The screenshot shows a YouTube interface with a playlist on the left and a list of five videos on the right. The playlist is titled "Our Guiding Principles in Action" by JHU SOURCE, with 5 videos and 32 views. The videos are:

- Impact of Working With SOURCE Students** (1:44) - 51 views, 1 month ago
- Commitment** (0:41) - 34 views, 1 month ago
- Shared Decision-Making** (0:59) - 10 views, 1 month ago
- Shared Vision and Values** (2:04) - 47 views, 1 month ago
- Mutuality and Respect** - 14 views, 4 months ago

In the 2023-24 academic year, the next cohort of Community Fellows reviewed these Partner-to-Partner Conversations. Their review and analysis aimed to identify stories of impact that reflected exemplary projects and partnerships that carried out the **Guiding Principles of Community Engagement**.

Their analysis yielded a **series of videos** and stories that show some of wide range of the impacts that academic-community partnerships have in Baltimore. These videos are valuable communication tools for SOURCE and CBOs alike to share how social justice is enacted in practical activities all over our city!

Special Thanks

SOURCE Governing Board 2023-2024

Johns Hopkins Bloomberg School of Public Health

Josh Sharfstein, MD
Vice Dean for Public Health Practice and Community Engagement

Michael Ward, MEd
Associate Dean for Enrollment Management and Student Affairs

Vanya Jones, PhD, MPH
Assistant Dean for Community-Engaged Research

Paulani Mui, MPH
Assistant Director, Office of Public Health Practice and Training

Student Representatives

Nathalie Akbari

Melanie Bolden

Sarah Cole

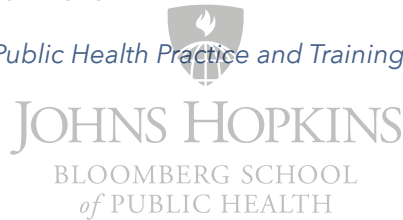
Stephie-Anne Duliepre

Lincoln Hopkins

Ayush Kumar

Abigail Lofton

Ali Aahil Noorali



Johns Hopkins University School of Nursing

Jennifer Dotzenrod
Associate Dean for Enrollment Management

Hae-Ra Han, PhD, MSN, RN
Associate Dean for Community Programs and Initiatives

Student Representatives

Alyssa Apilado

Coral Estefania Alonso Garcia

Sarah Geiler

Emma Jagasia

Kerlie Jean Baptiste

Keanna Qarooni



Johns Hopkins University School of Medicine

Barry Solomon, MD, MPH
Assistant Dean for Student Affairs

Roy Ziegelstein, MD
Vice Dean for Education

Student Representatives

Aaron Bao

Eojin Choi

Nic Heckenlaible

Hyonoo Joo

Erica Lin

Saket Myneni

Elizabeth Schlant

Siddharth Venkatraman



Other JHU Representatives

Sierra Romero - *Center for Social Concern at Homewood*

Michael Preston - *Government and Community Affairs*

Brandin Bowden - *Urban Health Institute*

SOURCE Team 2023-2024

Mindi B. Levin, MS, CHES®, *Founder and Director*

Tyler Derreth, PhD, *Associate Director*

Rosemary Riel, *Assistant Director*

Z. Sequean Mahnke, MSW, *Assistant Director*

Eean Logan, *Program Coordinator*

Eryn Rich, *Administrative Coordinator*

Ezzat Shehadeh, *Communications Specialist*

Glenn L. Ross, *Community Consultant*

SOURCE Community Council Representatives 2023-2024

La'Tonya Bryant

Baltimore City Department of Social Services

Jayson Green

New Song Community Learning Center

Randi Pupkin

Art With A Heart

Glenn Ross

SOURCE Community Consultant, Baltimore Toxic Tour

Nan Ross

International Rescue Committee

Jose Simmons

Total Health Care

Kristin Topel

Hopkins Community Connection

Samuel Walker III

MERIT Health Leadership Academy

Tramour Wilson

PRIDE Center of Maryland

Special Thanks

2023-2024 SOURCE Senior Faculty and Community Fellows

Dr. Kelly Bower, PhD, MPH, RN, APHN-BC
Associate Professor, JHSON

Dr. Shannon Frattaroli, PhD
Professor, BSPH

Dr. Nicole Warren, PhD, MSN, MPH, RN
Associate Professor, JHSON

Tashi-Kali Acket
Executive Director, Clay Pots

Pam Bohrer Brown
Director of Maternal & Child Health,
Baltimore Medical Systems, Inc.

2023-2024 SOURCE Community Service Award Recipients

Individual Student Awards

Ayush Kumar - Bloomberg School of Public Health
Michelle Galat - School of Nursing
Connie Chi - School of Medicine

Student Group Awards

J.B. Grant Society - Bloomberg School of Public Health
Refugee Health Partnership - School of Medicine

Faculty Award for Excellence in Service-Learning

Dr. Sarah Murray
Bloomberg School of Public Health
Department of Mental Health

Community Mentor Award

Justin Barry
Green and Healthy Homes Initiative

Student Groups Who Collaborated With SOURCE in 2023-2024

SOURCE collaborated with numerous student groups across the 3 Johns Hopkins health professional schools in 2023-2024 who contributed to our work in different ways, including organizing donation drives and volunteering with partnering CBOs. SOURCE would like to thank and recognize the following groups, and others, for their outstanding collaboration and community service activities with Baltimore:

BSPH

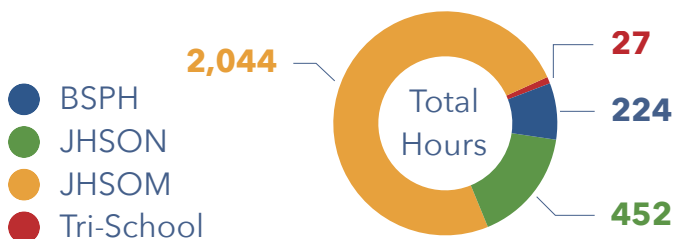
- Anna Baetjer Society
- African Public Health Network
- Latino Public Health Network

SON

- Jewish Nursing Student Association
- Nursing Students for Harm Reduction
- Pediatric Interest Group

SOM

- Black Men in White Coats
- Bamboo Sprouts
- APAMSA
- Refugee Health Partnership
- VISION



2,747 hours of
service to the community
contributed by **student
groups**



Special Thanks

SOURCE Partner Community-Based Organizations

SOURCE partners with approximately 100 Community-Based Organizations in Baltimore. Thanks to all of you for working with our center, our students, and our faculty and staff. We could not do our work without you! Newest partners who were added in 2023-24 are listed in **bold**.

901 Arts
Action in Maturity
Alzheimer's Association, Greater MD Chapter
Amazing Grace Lutheran Church
American Heart Association (AHA)
American Red Cross, National Capital and Greater Chesapeake Region
Art with a Heart, Inc.
Asylee Women Enterprise
B'More for Healthy Babies
Baltimore American Indian Center
Baltimore City Department of Social Services
Baltimore City Health Department
Baltimore CONNECT
Baltimore Crisis Response, Inc.
Baltimore Curriculum Project
Baltimore Food Policy Initiative
Baltimore Harm Reduction Coalition
Baltimore Medical System Inc. (BMSI)
Baltimore Safe Haven
Baltimore SquashWise
Banner Neighborhood Community Corporation
Bea Gaddy Family Centers
Blue Water Baltimore
CASA de Maryland
Charm City Care Connection
Chase Brexton Health Services
Child First Authority
City Springs Elementary/Middle School
City Weeds LLC
Civic Works
Clay Pots
Commodore John Rodgers Elementary/Middle School
Community Law Center
Court Appointed Special Advocates (CASA)
Dayspring Programs, Inc.
Elev8 Baltimore
EndsideOut Inc.
Energy Justice Network
Episcopal Refugee and Immigrant Center Alliance (ERICA)
Esperanza Center
Family Recovery Program
Franciscan Center, Inc.
FreeState Justice, Inc.
From Prison Cells to PhD, Inc.
Gallagher Services
GEDCO
Gilchrist Hospice Care
Good Harvest
Greater Baybrook Alliance
Green & Healthy Homes Initiative
Habitat for Humanity of the Chesapeake
Hampstead Hill Academy
HealthCare Access Maryland

Health Care for the Homeless
HeartSmiles
Helping Up Mission
Henderson-Hopkins School
Historic East Baltimore Community Action Coalition
Hopkins Community Connection
House of Ruth Maryland
Institutes for Behavior Resources, Inc./REACH Program
International Rescue Committee
Intersection of Change
JHUSON COMPASS Center
Julie Community Center
Lil' Laughs Corporation
Living Classrooms Foundation
Lori's Hands
Maryland Food Bank, Inc.
Maryland New Directions
MD Citizens Health Initiative/Health Care for All!
MERIT Health Leadership Academy
MissionFit
Moveable Feast
NAMI Metro Baltimore
New Song Community Learning Center
Next One Up
Operation PULSE
Our Daily Bread
Parks & People Foundation
Paul's Place
Planned Parenthood of Maryland
Power Inside
Pride Center of Maryland
Pro Bono Resource Center
Project PLASE
Public Justice Center
Reading Partners
Roberta's House
Shepherd's Clinic
Sisters Together And Reaching (STAR)
Soccer Without Borders
Southeast Community Development Corporation
SPARC Women's Center
Tench Tilghman Elementary/ Middle School
The 6th Branch
The Door
The Family Tree
The Light of Truth Center, Inc.
The Men and Families Center
Thread
Total Health Care
TurnAround, Inc.
Weinberg Housing and Resource Center
Wolfe Street Academy
Youth Opportunity (YO!) Center



SOURCE



JOHNS HOPKINS
UNIVERSITY



2002 MCELDERRY ST, BALTIMORE, MD 21205
(410) 955-3880 | SOURCE@JHU.EDU | SOURCE.JHU.EDU



@JHUSOURCE