



Student Governing Board Members 2013 – 2014

SOURCE is proud to present the Student Members of our Governing Board. Students from the Johns Hopkins University Schools of Medicine, Nursing, and Public Health are encouraged to reach out to these student leaders in order to: share ideas, offer programming recommendations, ask questions about community engagement, and more. These student leaders meet with SOURCE staff regularly, and are up-to-date on a variety of campus and community issues. Additionally, these student leaders are exceptional role models who are involved both on and off campus. Read more about our wonderful student leaders from the Schools of Medicine, Nursing, and Public Health.

SOURCE (Student Outreach Resource Center)

The Community Service and Service-Learning Center

Serving the Johns Hopkins University Schools of Medicine, Nursing, and Public Health

SOURCE (Student Outreach Resource Center)

2017 E. Monument St.

Baltimore, MD 21205

P: 410-955-3880

F: 410-502-2736

source@jhsph.edu

www.jhsph.edu/source

www.facebook.com/JHUSOURCE - *Like Us!*

[http://twitter.com/JHUSOURCE](https://twitter.com/JHUSOURCE) - *Follow Us!*

www.igive.com/SOURCE - *Support Us!*

The **SOURCE** for community involvement opportunities.

School of Medicine

CODY CICHOWITZ

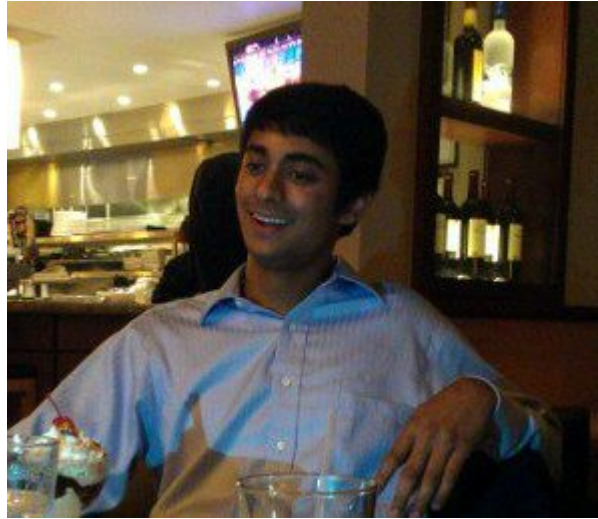
(med 17)



My name is Cody Cichowitz, and I am first year student at the Johns Hopkins School of Medicine. I grew up in rural Colorado and moved to Baltimore after graduating from the University of Colorado at Boulder. Upon moving to Baltimore, I quickly fell in love with the city and grew to appreciate the real sense of hope and unity I felt in many different communities. Service has always been an important part of my life, and here in Baltimore I have volunteered at People's Community Health Center and tutored at two different elementary schools. I also spent a year working as a research assistant at the Johns Hopkins Adult Sickle Cell Center, where I was deeply touched by the courage and resilience demonstrated by adults living with sickle cell disease.

I feel honored to serve on the SOURCE Student Governing Board and join in SOURCE's work. I am excited to learn more about the Baltimore community together with my classmates at Hopkins and to encourage my peers to build service and advocacy into their lives both as students and future professionals. I am very much looking forward to being a part of SOURCE and specifically helping support the many individuals and community-based organizations that work tirelessly to make Baltimore a better place.

ANKUR DOSHI
(med 17)



Hello everyone! My name is Ankur Doshi, and I am a first year student at Johns Hopkins School of Medicine. Though I was born in Detroit, I grew up in Atlanta, and attended Vanderbilt University in Nashville, TN, where I majored in Neuroscience and Economics.

I am most excited about the opportunity to be a SOURCE Governing Board Member. As an undergraduate student I was involved in a number of service activities, from tutoring middle school students to working with alcohol and drug rehab men to volunteering at a hospital ER. I attended Alternative Spring Break for four years to sites all across the country. I also had the privilege to serve on the Habitat for Humanity board for three years, where I helped implement many administrative and organizational changes. I have realized that serving in a managerial role and working with a team is important in amplifying the impact service can have in a community.

I entered undergrad with an unknown career path and unknown major, and community service helped me find my passion in healthcare and medicine. I served as a nurse volunteer at a local Nashville clinic, where I worked with refugee, non-English speaking, and uninsured patients. As I took vital signs and recorded chief complaints, I had the privilege of hearing their stories and issues with health. I also had a similar experience working with children, their families, and health professionals in Zambia on a pneumonia global health project. As one can imagine, these two experiences greatly influenced me to attend medical school.

All of these various experiences taught me that service is a great way to educate oneself on social issues, foster meaningful relationships with people, and develop as an individual. I believe that SOURCE plays an integral role in the quality of our education by effectively connecting students with various opportunities in Baltimore. As a Governing Board member, I will do my best to help SOURCE further accomplish its missions.

MELISSA LIU
(med 14)



I am originally from Chicago, and after graduating from Stanford in 2009, I worked for one year in a research laboratory at the National Eye Institute. I am currently a third year medical student at Hopkins, and I am really looking forward to serving on the SOURCE Governing Board and InterAction Council. At Stanford, I had a variety of community-oriented service and service-learning experiences that nurtured my interests in campus-community partnership and the underserved. I worked on an interdisciplinary team of students and community partners to improve chronic disease management at a local clinic. I also co-led an Alternative Spring Break program on the health care of underserved communities in Central California. Service and service-learning are important to me, and I look forward to working with SOURCE to build mutually beneficial partnerships between Hopkins students and the Baltimore community.

KATHRYN MIELE

(med 15)



I am from Rochester, NY and completed New York University's Pre-health Post-Baccalaureate Certificate Program. I also hold a Master's degree in International Affairs from The New School, and was graduated from the College of William and Mary with High Honors in East Asian Studies. I have seven years of professional nonprofit experience, including working in the fields of international reproductive health with EngenderHealth; global diplomacy with One To World; environmental advocacy with Green Corps; and grassroots community organizing in Kenya and India with GROOTS International. My research is on *Trichomonas vaginalis*, HIV/AIDS, Japanese sociological development, and Emergency Department-based sepsis protocols. Volunteering has always been important to me; I mentored high school students with the Opportunity Network, served as an Emergency Room Volunteer at New York Downtown Hospital, and organized medical brigades to Ecuador with MEDLIFE. Currently, I work with IMP and HealthLeads. In my spare time, I enjoy being taken for runs by my Jack Russell Terrier, Zidane.

As a third-year medical school student and member of the SOURCE Governing Board and the InterAction Council, I am looking forward to bridging the public health, nursing, and medical schools to benefit all members of our community.

AMY QUAN
(med 16)



My name is Amy Quan, and I am a second-year medical student at the Johns Hopkins School of Medicine. I was born in China but raised in California. I moved across the country to attend Dartmouth College, and there – not only did I experience my first snowfall, I stepped into my first leadership roles in community service. Hurricane Katrina struck my freshman year, and students from Tulane University were invited to enroll in Dartmouth. Touched and inspired by their resilience, my classmates and I rallied the community to raise money to support our efforts to drive down South and help gut houses.

After college, I joined the Peace Corps and served as a Community Health Educator in Turkmenistan from 2008-2010. I would never forget these two years – I learned a new language and acclimated to a new culture, loved people I still call family, walked the dirt roads to the 5000 homes in my village – to say hello and to ask what I could do for them. Targeting my efforts toward prevention, I led hypertension and general wellness campaigns and built a safe motherhood resource room to reduce maternal and child mortality and morbidity. Peace Corps Turkmenistan closed their doors this year, and I thank the Turkmen people for having welcomed me into their homes.

This past year I graduated from the Bloomberg School of Public Health with an MPH, with a concentration in epidemiology and biostatistics. Currently, I am one of SOURCE's HIV counselors and a screener in the Charm City Clinic. Serving on the SOURCE Student Governing Board, I want to invite my classmates to invest in Baltimore with me, and I will work hard to connect us with the wide spectrum of Baltimore community partners.

MAX ROMANO

(med 14)



My name is Max Romano and I consider myself honored to be able to participate in the student governing board for SOURCE. My background in public service is diverse, but in all its twists and turns it has led me here to Hopkins with a singular commitment to learning how to help people improve their health. I grew up in St. Louis, MO as a member of the Ethical Society of St. Louis, a non-theistic religious community devoted to promoting ethical action. After high school I deferred college for one year to do public service work with the AmeriCorps National Civilian Community Corps. My jobs in AmeriCorps ranged from after-school tutoring in a Boys and Girls Club to repairing roofs in central Florida after a major hurricane season, and that work opened my eyes to the great diversity among "public service" organizations. I studied Human Biology with a focus in Public Health at Stanford University, and I spent my junior year of college working public service internships with the Roatán Volunteer Pediatric Clinic in Honduras, the National Hispanic Medical Association in Washington, DC, and the Arlington Free Clinic in Virginia.

Here at Hopkins, I feel that one of the strongest links between the school and its surrounding community exists via students' actions, so I joined the SOURCE governing board to be a part of the action. The unique dimension that I hope to bring to the governing board is my focus on helping others by improving relationships within the board and between Hopkins and the community around it. I look forward to working with SOURCE to make this world we live in a little more just.

SAM SCHARFF
(med 15)



My name is Sam Scharff, and I am a third year student at the Johns Hopkins School of Medicine. I grew up in Oklahoma City and studied Zoology at the University of Oklahoma. As an undergraduate I had many opportunities to give back to my hometown. I volunteered for three years in the free clinics of Oklahoma City and co-founded an organization that trains college students to be strategic consultants for nonprofits in Central Oklahoma. I also have worked in the Office of the Surgeon General as a federal liaison to state, local, and nongovernmental organizations to train public health disaster responders. As part of this experience, I helped to launch a warehouse-sized clinic with Remote Area Medical to address some of the needs of the under-served in Oklahoma City.

Throughout these experiences I bore witness to the tremendous impact local nonprofits can have on their communities. By working with SOURCE, I hope to tap into the passion of community organizations around Baltimore and empower them to support my new hometown. I am beyond excited to work with community leaders, Hopkins experts, and students alike toward a better Baltimore.

SNEHA SHAH

(med 16)



My name is Sneha Shah, and I am a second year medical student here at JHU SOM. I am from Chicago, and I attended Duke for undergrad and majored in Economics. Community service, specifically in the realm of global health, was a major focus of my extracurricular involvement at Duke. Initiatives I started at Duke stemmed from conversations with community members about needs in the community. They ranged from founding a chapter of the Foundation for the International Medical Relief of Children at Duke to starting a public health curriculum component of a yearly medical-mission trip conducted by Duke students and physicians to Honduras. One of my most defining community services experiences was during the summer of 2010, when I had the opportunity to travel to Naama, Uganda to conduct research and work with the community on ways to address maternal mortality. There, I studied perceptions and behavior regarding hospital delivery, and partnered with community members and leaders to create a pilot transport program to address the need for transportation to a hospital during delivery. Every day I was there, I witnessed how resourceful and brilliant the community members I was working with were—I realized my role there was not to “fix” anything for them, but rather to serve as a catalyst for community-driven change. I see SOURCE as an organization that serves as such a catalyst for the Baltimore and Hopkins community, and this is why I am excited to serve as an executive board member.

When deciding which medical school to attend, one of the most important factors for me was whether the school served a population that was diverse and underserved. I wanted to find a way to get involved with working directly with community members to address what they felt was important to them. I am excited to work with students across the JHU schools to foster ways for us to be a positive presence in our new Baltimore home.

JEAN SUH
(med 15)



Born and raised in northern Virginia, I graduated college here at Johns Hopkins University in 2010 and am back for my third year of medical school. My passion for community service was instilled by my volunteer experiences in Baltimore throughout my undergraduate studies. As a freshman in college, I began volunteering at National Student Partnerships - Baltimore, a resource center for low-income community members. There I worked directly with clients and listened to their struggles as I helped them apply for jobs, search for housing, and seek government and community assistance. I also had the opportunity to volunteer at Baltimore Rescue Mission Clinic, which provides free medical care to the homeless.

My experiences in Baltimore inspired me to take a year between college and medical school to serve as an AmeriCorps VISTA Site Coordinator at Communities In Schools of the Nation's Capital, a non-profit organization that aims to help at-risk youth stay in school and succeed in life. I learned through this experience about the needs of the students and the surrounding community at the elementary school I was stationed in, as I was responsible for bringing in resources and programs to help fulfill those needs.

Community service has been integral in shaping my outlook on life, which is why I am excited to serve on the SOURCE Governing Board. There are so many great organizations in Baltimore and so many great students at Hopkins, thus so much potential to make magic come alive in Charm City. I hope that through my involvement with SOURCE, I can be a catalyst for change.

KATIE WASHINGTON

(med 14)



My name is Katie Washington, and I am a third year MD/PhD student at the Johns Hopkins School of Medicine and Bloomberg School of Public Health. I grew up in Gary, IN, and I graduated from the University of Notre Dame in May 2010. During my time at Notre Dame, I was involved in various community service and service learning activities. I participated in five semester-long immersion seminars (two in Indianapolis, two in South Bend and one in Chicago) through the Center for Social Concerns, acting as a student coordinator for two of them. Through these experiences, I spent time working with a variety of community organizations exploring issues including youth violence, domestic violence and the effects of poverty and wealth on the relationship between Notre Dame and the City of South Bend.

My previous service-learning experiences underscored the importance of pairing volunteerism with critical reflection in our attempts to affect social change. As part of SOURCE/InterAction I've enjoyed spending time with community leaders, my classmates and other Hopkins affiliates to figure out how we can use our combined gifts, talents and resources to address some of the challenges facing our community. I'm also involved with community service through the Student National Medical Association. It has been wonderful to have the opportunity to explore social justice issues in East Baltimore. SOURCE has played an important role in helping me to integrate service into my professional development.

MARK WILCOX

(med 16)



I grew up in Farmington, New Mexico and attended Grinnell College. After graduating, I joined Teach For America and taught for two years at Patterson High School in East Baltimore. In my second year of teaching, I co-founded the Medical Education Resources Initiative for Teens (MERIT) and now serve as Director of Development. At MERIT, I forged key partnerships with the National Institute on Drug Abuse and Johns Hopkins Bayview Medical Center, helped select and train mentors, and led communications with community members. I now oversee the implementation of key organizational projects, including volunteer and scholar recruitment, fundraising, marketing, community relations, and program evaluation. I look forward to joining the Governing Board at SOURCE. In the same way that I am committed to ensuring the growth and effectiveness of MERIT, I am excited about building relationships with community partners and other board members as we work together to guide the direction of the center.

OPHELIA YIN
(med17)



Hi! My name is Ophelia Yin and I grew up in Southern California. From there, I ventured far from home to obtain my Bachelors at Princeton University, where I majored in Ecology and Evolutionary Biology with a minor in Global Health. I really enjoy teaching, so much of my service to the community in college was through high school student tutoring and work with the Petey Greene Prisoner Assistance Program, which helps prisoners obtain their GEDs while incarcerated in the hopes of reducing re-incarceration rates. I also worked for four years with the nonprofit Unite for Sight, partnering with other students to give community eye health presentations and workshops. Finally, I volunteered as a consultant for Learning Ally to improve their free audiobook products, which are targeted towards children with learning disabilities.

I joined SOURCE because I see it as a fantastic way to get involved in the Baltimore community, forge a personal connection with community members, and connect medical students to volunteer programs that will greatly enhance their education and overall happiness. SOURCE has already made a difference in my life by connecting me to TurnAround, an organization that counsels victims of sexual abuse and domestic violence in the emergency room; this volunteer activity fits perfectly with my interest in women's health, and I hope that I can play a role in helping other students find volunteer opportunities that similarly align with their passions. I also hope to take part in developing service-learning courses that supplement the medical curriculum. I am honored to be on the SOURCE Governing Board and I am excited to work with my SOURCE colleagues from the schools of Medicine, Nursing, and Public Health in the coming years.

School of Nursing

MOLLY GREENBERG



Hello, my name is Molly Greenberg and I am honored to have the opportunity to serve on SOURCE's Governing Board. Activism and service have always been an important part of my life and those values have led me here to Hopkins, where I hope to gain clinical experience while simultaneously using human rights advocacy to promote social justice. I grew up in New Jersey, Chicago, and Los Angeles and my experiences moving from place to place had (and still have) a huge impact on me. I love meeting new people and working with diverse communities to develop open-minded and trusting relationships in an effort to improve the lives of the individuals that live there.

My first experience with public health service was when I started volunteering with Better Existence with HIV (BEHIV) and became a certified peer educator on how to support those infected and affected by HIV/AIDS. I went to Skidmore College, where I pursued a B.A. in Women's Studies and American Studies and served as president of the school's umbrella community service organization. I helped staff Skidmore's Center for Sex and Gender Relations, where I worked with the local rape crisis center to educate the community on violence against women and to provide essential resources to those struggling with issues of gender identity, sexual, and psychological health. My experience with insufficient health care for underserved communities led me from work at the National Kidney Foundation of Southern California, to volunteering for a domestic violence emergency hotline, to a medication adherence study with HIV+ patients at George Washington Hospital, to advocating for quality care through my work at The National Partnership for Women & Families, to continued involvement with health initiatives for women at a local community health center and shelter, and to graduating with my MPH in Maternal and Child Health in 2011. Each of these experiences have reinforced my commitments and led me to ask what happens when the system does not protect everyone equally or, worse, fails to protect those who are in the most need of protection. The connections

I have made and the relationships I have sustained from listening and working in communities have enhanced my passion for public health, and have also provided me with an invaluable lens through which I see the world and believe that true change is possible. I hope to use this passion and positive outlook to help improve relationships between Hopkins and the diverse communities that make up Baltimore so that we can work together to reduce health disparities and make the world we live in more humane for everyone.

NYADIA GRIFFITH



My name is Nyadia Griffith and I am a BSN student in the Summer Accelerated Class of 2014. I earned my first degree in Mass Communications in 2005 from The Ohio State University. (GO BUCKS!) I spent the last 7 years as a Graduate Medical Education Coordinator at Nationwide Children's Hospital in Columbus, OH. My experience in helping children at the hospital is what first spurred my passion to continue my education and take a more active role in the community. I have participated in many community-based events, such as serving brunch at the JHH Children's House, running a half-marathon to raise money and awareness for the Relay for Life campaign with the American Cancer Society, served as Project Mentor with Big Brothers Big Sisters of Central Ohio, served as Chair of the Volunteer Committee for the Columbus Urban League, and operated as Assistant Chef at the North Market School of Cooking.

I was recently elected as the Class Director for the 2014 JHUSON Summer Accelerated Class. One of my primary responsibilities as the Class Director is to coordinate class-sponsored social and community events, and appoint committee chairs as appropriate. I am honored to represent the SON by serving on the SOURCE Student Government Board and by becoming a liaison for the School of Nursing and the SOURCE community-based organizations in Baltimore.

SARAH LOSINSKI



Hello all! My name is Sarah and I am from the Upper Peninsula of Michigan. I did my undergraduate studies at Michigan State, receiving my bachelors in health sciences and women's history. I began an interest in public health while studying abroad for a year in South Africa and the Galapagos. I have very been fortunate to have had a few more opportunities to volunteer in Guatemala, the Dominican Republic and Nicaragua as well, which continued to shape my interests, and I am just finishing up my MPH in global public health, hoping to eventually specialize in crisis and disaster management. I am also very interested in women's sexual health and sanitation. I began the accelerated nursing program here at Hopkins this past August and am excited to explore the connection between clinical medicine to community health. I am also involved with Health Leads at Bayview and have really enjoyed volunteering for various events throughout the city since my move from Michigan.

I have spent the past two years working as a substitute teacher and as an outdoor environmental education and adventure leadership instructor. In my free time, I enjoy thrift shopping, kayaking, cooking and running. I also love live theater, eggrolls, ice hockey, bluegrass music and meeting new people. Much of both my leisure and academic life revolves around community involvement and Baltimore has nothing but impressed me so far! I intend to stay here after I graduate and am excited to continuing exploring this city. I am honored to participate as a member of the SOURCE team and look forward to serving and assisting you in forming an intimate connection with Baltimore City. Cheers!

JENNIFER RONALD



I am currently in the Fall Accelerated Nursing Class of 2014. Born and raised in NYC, I received my BA in Political Science with a minor in Global & International Studies from Bard College. After college, I joined the Peace Corps, serving in Burkina Faso as a Girls Education and Empowerment volunteer. For the first three months of my service, I shadowed nurses in the clinic and on vaccination campaigns, conducted observations at the primary and secondary schools, and immersed myself in the community. After this community assessment, I initiated programs focusing on health and education promotion, centered on the schools and in the community. This experience was extraordinarily rich for me and shifted my career focus from law to nursing. I realized that I could use my skills and interests in advocacy to impact the health of others.

After returning home from the Peace Corps, I began looking for any job that would give me some exposure to healthcare and patient management and was exceptionally fortunate to be hired as a Research Coordinator at the Johns Hopkins School of Medicine. For the four years prior to nursing school, I recruited subjects for neurologic, emergent, and community-based clinical trials in Baltimore. These experiences fed the fire in me to become a nurse. In addition, to learn more about my new home, I volunteered in the International Rescue Committee and, as an interpreter, with the Tahirih Justice Center.

Throughout my life, I have had a strong interest in social justice. I am honored to join the Student Governing board because I believe that SOURCE's mission to foster community partnerships is essential to addressing inequalities while also building the strengths of both the Hopkins and Baltimore communities.

KEITRA THOMPSON



My name is Keitra Thompson and I am in my first semester at the School of Nursing. Originally from Indiana, I completed my undergraduate degree in Anthropology and Women's, Gender, and Sexuality Studies at Emory University in Atlanta, Georgia. Service and volunteerism has always been a driving force in my life and played an integral role in my time at Emory. During the last five years I have had the pleasure of advocating for and serving the needs of individuals internationally and domestically. Serving as the Volunteer and Case Management Coordinator for the Atlanta Asylum Network, a non-profit organization of health professionals and case managers who evaluate asylum seekers and promote human dignity through upholding human rights, I learned the value of social responsibility in leadership. My other areas of service include providing academic and social mentorship for young female victims of sex-trafficking, tutoring children at the International Community School (ICS), a school serving children of newly-arrived immigrants and refugees, and implementing a "READ, READ, READ" enrichment program for children from low-income households with deficits in early reading, writing, and math skills at the Albert T. Mills Enrichment Center located in one of the most prominent areas of violence and drug abuse in Atlanta, Georgia. In addition, as an intern at the West End Clinic, a medical facility specializing in serving underserved communities, I assisted with indigent care appointments and lab work. I have also served as a social services case worker for the Latin American Association of Georgia.

My decision to attend Johns Hopkins and pursue a career in public health nursing and research is centered on my desire to address health disparities and advocate for social justice. I am particularly interested in issues affecting marginalized groups within society from a clinical and theoretical perspective. As a SOURCE representative I am eager to work across the School of Nursing, School of Public Health, and the School of Medicine to serve Baltimore and beyond. I firmly believe everyone has the power to change someone's life in big and small ways. New to Baltimore and Johns Hopkins, I am excited to get involved and infuse others with a passion to change the world!

School of Public Health

EMILY FAXON



I am a first year MHS epidemiology student, having graduated from JHU as an undergraduate last year. For most of my life I have been passionate about being an active part of my community. My involvement began early, in elementary school, volunteering with Children for Children, an organization that encouraged youth to become civically engaged no matter what their background. It taught me that everyone, no matter what their upbringing or economic situation, can gain self esteem through volunteerism and giving. It was that understanding which led me in high school to join the Community Service Advisory Board. Our role was to design and organize volunteer opportunities for other students in our school. For myself, I made a 4-year commitment to volunteer at a community center in Bronx, New York, tutoring and mentoring young children. During those 4 years, I formed strong relationships with the surrounding community and established a love and commitment to grassroots community work. Sparked by these experiences, I took my passion for service overseas. I first traveled to El Salvador and worked at a health clinic. The following year, after becoming a Wilderness First Responder in Belize, I helped set up two children's clinics in rural villages. For my spring semester of junior year in college I studied abroad in South Africa. While there I volunteered in the children's ward of a tuberculosis hospital and taught in an afterschool program in an impoverished township. The following summer I worked at the Clinton Foundation's Alliance for a Healthier Generation in the Healthy Schools Program, focused on reducing childhood obesity. In my time in Baltimore, I have volunteered at an art afterschool program as well as worked at Hand in Hand, mentoring and tutoring youths charged as adults who had recently been released from the Baltimore City Detention Center. This past year I was involved in a research project in South West Baltimore. 'Eat Right, Live Well' analyzed whether supermarket based interventions could influence healthy food choices. This helped expand my understanding of

service dynamics in the Baltimore community and only furthered my passion for the city. As my studies in Baltimore continue, I plan to become even more deeply involved in the community of the city that I now consider home.

ROSS JOHNSON



Greetings, my name is Ross Johnson and I am honored to serve on the SOURCE governing board. Embodying the model of Collaborative Partnerships described in the framework by Emanuel et al 2004, I believe SOURCE serves as an avenue for productive and effective positive change in the city of Baltimore.

As means of introduction, I was born and raised in the city of Philadelphia, PA. My father was a police officer and my mother is a nurse, so service is part of the air that I breathe. Currently, I am a MPH student in the Bloomberg School of Public Health focusing on developing interventions for HIV prevention. I first began my work in HIV prevention working on vaccine development as an immunology doctoral student in the lab of Dr. Yvonne Paterson at the University of Pennsylvania. At that time, it was believed that science would control the spread of HIV through vaccine interventions. Since that has yet to happen, I have formally entered into the realm of public health to address the issue using education, prevention, and empowerment. Prior to matriculating in the MPH program at Johns Hopkins, I worked as an educator in the areas of biology, microbiology, and sexually transmitted infections. Additionally, I have worked in private industry doing research and development for biomedical products both domestically and abroad, including a visiting scholars position at the University of Groningen in the Netherlands. Precipitating from my research, work and life experiences I have come to believe that Hope is a powerful gift that requires action; and Faith is an action verb. It is through this lens that I look forward to serving the mission of SOURCE.

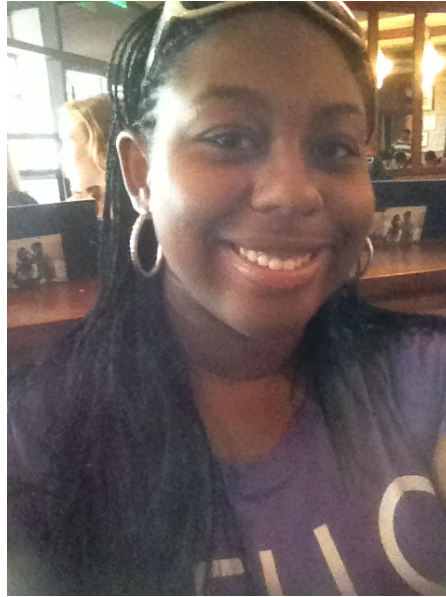
LAVANYA MADHUSUDAN



My name is Lavanya Madhusudan; I am an MPH/MSW student at the Johns Hopkins Bloomberg School of Public Health and the University of Maryland School of Social Work. I was born in Bangalore, India but was raised primarily in Farmington Hills, Michigan. I completed my BA in Public Health and Anthropology at the University of Pennsylvania in Philadelphia. Through grant support, I was able to plan and conduct an independent mixed-methods study of child malnutrition and community health in four urban slum communities located in Bangalore, India. This experience set the foundation for my career path and interests within public health, and taught me that the community is the context in which public health occurs, and thus, in order to be the most effective public health practitioner that I can be, the community must be my main area of focus. I have also had the privilege of serving as a Community Health Education volunteer in an indigenous community in rural Ecuador, working with several nonprofit organizations to improve the health of West Philadelphia residents, and most recently, working with residents of several neighborhoods in Southwest Baltimore to create stronger, healthier communities. I will continue serving residents of Southwest Baltimore during the 2013-14 academic year as a Baltimore Albert Schweitzer Fellow. I have also had the opportunity to tie in clinical experience with my community work during 3 years of work in pediatric clinical research at both the Children's Hospital of Philadelphia and the Children's National Medical Center in Washington, DC. Through all of these experiences, I have learned that the most effective, ethical and sustainable public health programs are those that are community-centered and view communities as the experts and owners of the program and its achievements.

I am grateful that an organization such as SOURCE exists to promote the importance of community involvement and engagement in Public Health, Medicine and Nursing, and am honored to serve as an MPH representative on the SOURCE governing board. I am committed to SOURCE's mission and am excited to promote SOURCE's activities and the importance of community-based work in health. I look forward to learning from peers, faculty and staff members of the SOURCE governing board, and to continue learning from the true experts of public health, the community members and community-based organizations whom we are here to serve.

JASMINE RAGLAND



Hello! I'm Jasmine, and I am from Colton, CA. I did my undergraduate studies at Stanford University, receiving a BA in Human Biology with a concentration in Female Development as well as a minor in Creative Writing. As an undergraduate I did research on young women and eating disorders at the Stanford WEIGHT lab and worked as a peer writing tutor for 3 years. I first became interested in public health when I served as an intern for The Community Foundation of Riverside and San Bernardino Counties, where I was able to see how the environment of a community can impact the health of the people living in it.

My passion for health and public health grew when I served as a volunteer for Arbor Free clinic, and it's still growing! Right now I am a first year student in the MSPH program for Health Education and Community. My immediate goal is to improve the health of others by becoming a health educator; eventually I want to become a primary care physician that focuses on both practice and prevention. My interests are positive health psychology, teen health, sexual health issues, and making progress on preventing health disparities. I enjoy dancing, cooking great food, good books, playing RPGs, going to the movies, and just having fun. I am excited about being on the SOURCE team! I look forward to assisting everyone in linking their interests to service so that we can get to know the community around us as well as each other through meaningful service. Let's make this a fantastic experience!

SIMRAN SABHERWAL



I am a fourth year PhD student at the School of Public Health in the Department of Population, Family, and Reproductive Health. After growing up in the Northern California Bay Area, I attended college in Berkeley and completed my MHS at JHSPH. For the past couple years, I returned to the Bay Area where I worked at the University of California, San Francisco (UCSF) Philip R. Lee Institute for Health Policy Studies as a researcher on issues pertaining to child and adolescent health. Community outreach and service have been a pivotal and formative part of my life. Throughout college, I was actively involved in a student-run organization known as the Health and Medical Apprenticeship Program (HMAP) that was dedicated, among other things, to placing students in health related community organizations throughout the Bay Area and supplementing this experience with student-led discussion sections focused on various public health topics and current events. In Baltimore, I have volunteered with Planned Parenthood of Maryland as a member of their Speakers Bureau and also as a Research Assistant through the SOURCE Phase Practicum. More recently, I was a Girls Action Team Co-Coach for Girls For a Change (GFC) in the San Francisco Bay Area. In this role, I was able to work with a team of urban, middle school girls to support them in creating and implementing a social change project to improve their communities. Through all my experiences, I've recognized the unique and powerful assets that many communities possess and that can be harnessed for improving their health and wellbeing but that are often unfortunately ignored in the pursuit to address needs and problems from the outside. I know SOURCE shares these values and is committed to making sure that JHMI students, faculty and staff have opportunities to engage with and contribute to the greater Baltimore community, and I'm honored to be joining the SOURCE Student Governing Board. I look forward to increasing awareness and utilization of the wonderful services SOURCE provides and to ensuring that the JHMI campus continues to be a vibrant component of its surrounding community.

Student Staff 2013 – 2014

DARA GOLDBERG

SOURCE Service-Learning Faculty and Community Fellows Program Assistant



Dara Goldberg is a Master's of Public Policy student concentrating on education policy and nonprofit management. She graduated from Drew University with a BA in Behavioral Science in 2009, where she received the Senior Recognition award for outstanding service to her University and the community. After graduating from Drew Dara worked for the Girl Scouts of the Jersey Shore before completing two years of AmeriCorps here in Baltimore. During her time in the AmeriCorps program Public Allies Maryland Dara worked as the Assistant Director of Camp Fire USA Maryland and the Community Engagement Coordinator at The SEED School of Maryland. Dara brings years of experience with out-of-school-time program management, social media, and service-learning to her position at SOURCE. In her spare time Dara loves to garden, go to concerts, and play rugby.

KELLY KING

Baltimore Community Practicum (BCP) Course Teaching Assistant



Kelly is a first year doctoral student in the Department of Health, Behavior and Society. Before coming to Hopkins she received her BA in Psychology from Amherst College in 2008 and her MPH in Behavioral Science and Health Education from Emory University in 2011. Her research focuses on HIV prevention in low-income, urban communities, with a particular interest in the impact of violence, substance use, and interface with the criminal justice system on sexual health. Kelly currently works at Lighthouse, a community-based research center that focuses on health promotion and disease prevention, and is excited to serve as a TA for the Baltimore Community Practicum course. Outside of school, Kelly enjoys trying to convince anyone she talks to that Detroit is on the verge of a major comeback, independent films, brunch and rollerblading.

BECCA PURNELL

School of Nursing, Community Outreach Program, Program Assistant



I am originally from Chicago-- I just moved to Baltimore in August to start the BSN program this fall. Before coming here, I served for a year through Americorps teaching at a charter school in Chicago and also received my Master of Public Health with an emphasis in applied community health. Most recently, I worked for two years as the project coordinator for the Chicago site of an international HIV PrEp prevention study. I am extremely excited to continue working in community health; my goal is to work as a family nurse practitioner in a community clinic, working to improve access to care and quality of care for under-resourced populations.

YASMINE OGALE

Media & Marketing Program Assistant



Yasmin Ogale is a MSPH student in the Johns Hopkins Bloomberg School of Public Health in the Department of International Health, and is currently serving as SOURCE's Media and Marketing Coordinator. Having graduated with a BA in journalism and chemistry from NYU, Yasmin is interested in the intersections of public health practice and health journalism, particularly within the scope of pediatric infectious disease and nutrition. This past year Yasmin worked as an intern with The Carter Center's Mental Health Health and Global2000 public health programs in Atlanta, and is looking forward to continuing her education in the field of public health with a further PhD study or work placements abroad. While not in school, Yasmin enjoys painting and singing, as well as spending time with family and friends.

NOREEN QURESHI

Baltimore Community Practicum (BCP) course and The Connection Community Consultants Program Assistant



It was Noreen's involvement in a student-led venture for a Digital Media Entrepreneurship course at Arizona State University that encouraged her to develop an entrepreneurial mindset. The most notable lesson she took away from this experience was that improvement is rooted in change and innovation, mechanisms which thrive best in a climate of challenge and adversity. This idea still continues to influence Noreen's approach to all of life's opportunities. Graduating with a Bachelor's degree in Life Sciences from ASU, she regularly questions and searches for answers as to why this spirit of change has not been overwhelmingly embraced in the healthcare industry.

Noreen's desire to work and advocate for patients on a larger scale led her to pursue certification as a Clinical Research Associate (CRA). Learning how to monitor and manage clinical trials operations effectively has motivated her to broaden her expertise in other health settings. She aspires to tackle current challenges in clinical research and healthcare delivery in the midst of a changing landscape of healthcare reform, an ideal breeding ground for innovative creativity to stimulate advancements throughout the industry.

Outside of her academic endeavors in the MHA program at Johns Hopkins University, Noreen has been very passionate about forging strong ties within the local Baltimore community through her on-campus position as Program Assistant at the Student Outreach Resource Center. She enjoys her involvement in managing The Connection Community Consultants Program and the Baltimore Community Practicum. In her spare time, she can most likely be found hiking.

Words of wisdom to live by:

It is better to light a candle than curse the darkness. ---Eleanor Roosevelt

SOURCE (Student Outreach Resource Center)

2017 E. Monument St.

Baltimore, MD 21205

P: 410-955-3880

F: 410-502-2736

source@jhsph.edu

www.jhsph.edu/source

The ***SOURCE*** for community involvement opportunities.